

UPVC DOORS

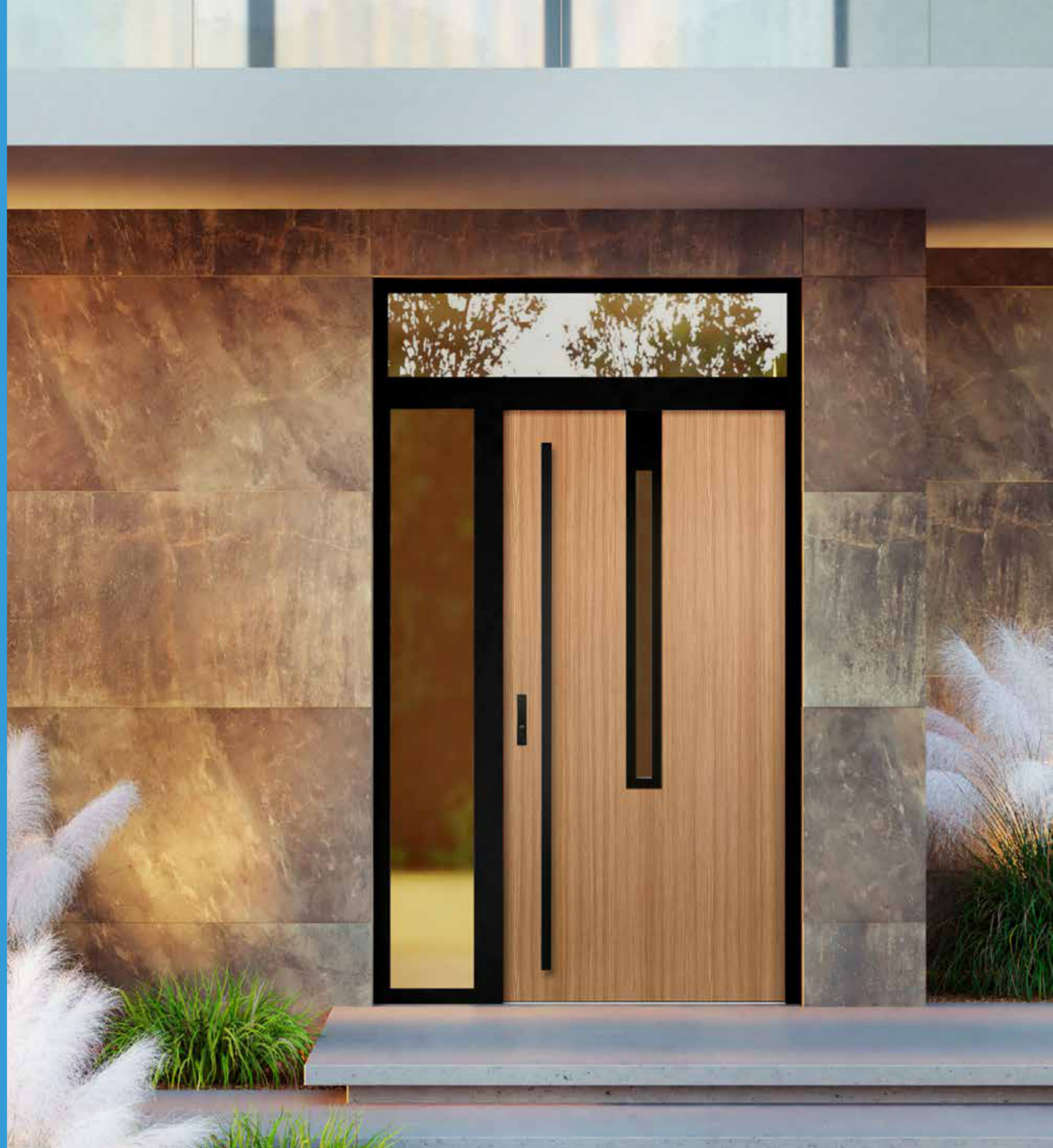


*Kevin Dickinson*  
Limited

**K64 COLLECTION**

# LUXURIOUS, AFFORDABLE ENTRANCE DOORS

KAT K64 contemporary doors are extremely secure, with Passive House level thermal values. By combining world class engineering and design, and utilising the highest quality, perfectly suited steel and aluminium, our bespoke doors can be manufactured to sizes much wider and higher than a composite door.





K1- Model 4



K1-Model 1



K1-Model 2



K1-Model 5



K2- Model 1



K2-Model 1



K2-Model 2



K2-Model 3



K2-Model 4



K2-Model 5



K3-Model 6



K3-Model 1



K3-Model 2



K3-Model 3



K3-Model 4



K3-Model 5



K4-Model 1



K4-Model 2



K4-Model 3



K4-Model 4



#### ULTRA LOW U-VALUES

K64 solid door models exceed Passive House standards with an incredibly low U-Value of just 0.77 W/m<sup>2</sup>K. Glazed doors are 0.88 W/m<sup>2</sup>K.



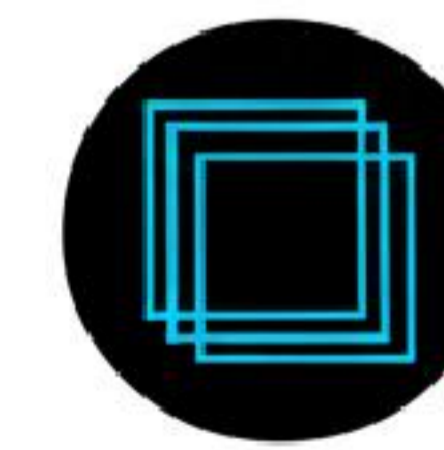
#### COLOURS

Choose from 16 luxury "Solar Shield" finishes. Dual colours also available.



#### DOOR SIZES

K64 single doors can be manufactured in sizes up to 1150mm wide and 2250mm high.



#### GLASS

48mm triple glazing is provided in all glazed designs, including toplights and sidelights.



#### RC2 & PAS 24 SECURITY AS STANDARD

For peace of mind, K64 front doors conform to RC2 and PAS24 security.



#### WEATHER TEST RESULTS

|                  |         |
|------------------|---------|
| Air Permeability | Class 4 |
| Wind Load        | Class 4 |
| Deflection       | Class C |
| Watertight       | Class 3 |



K5-Model 4



K5-Model 3



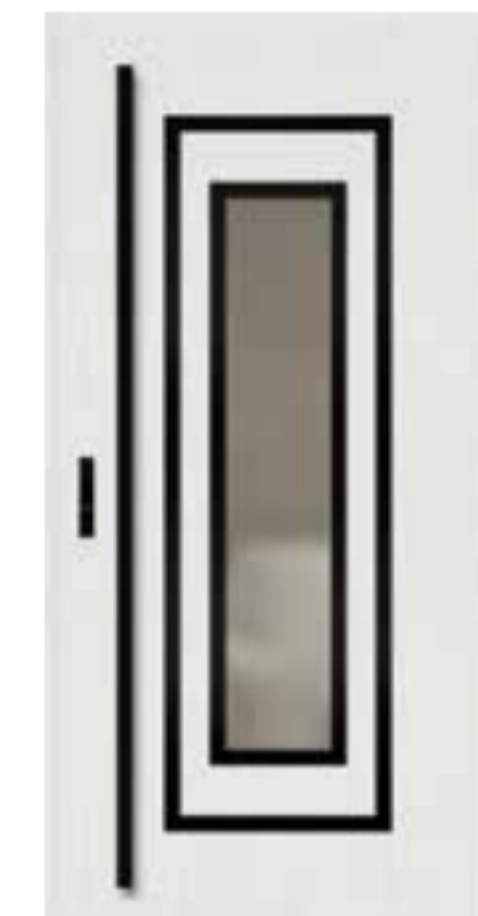
K5-Model 5



K5 -Model 6



K6-Model 5



K6-Model 1



K6-Model 2



K6-Model 3



K6-Model 4



K7-Model 3



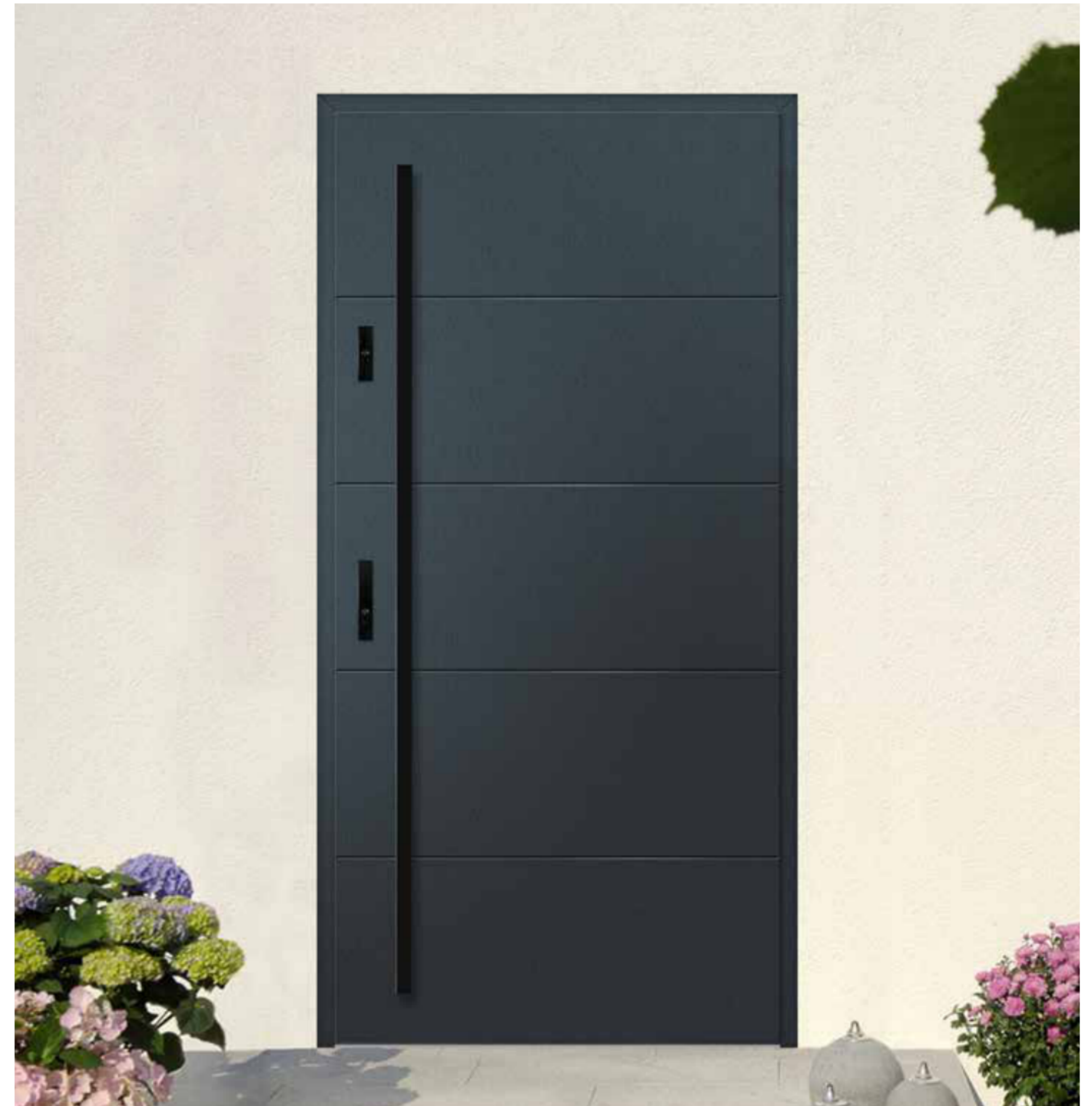
K7-Model 1



K7-Model 2



K7-Model 4



K8-Model 3



K8-Model 1



K8-Model 2



K8-Model 4



K9-Model 1



K9-Model 2



K10- Model 3



K10-Model 1



K10-Model 2



K10-Model 4



K10-Model 5



K11- Model 5



K11- Model 1



K11- Model 2



K11- Model 3



K11- Model 4



K11- Model 6



K11- Model 7



K11- Model 8



K12-Model 2



K12-Model 1



K12-Model 3



K12-Model 4



K13-Model 1



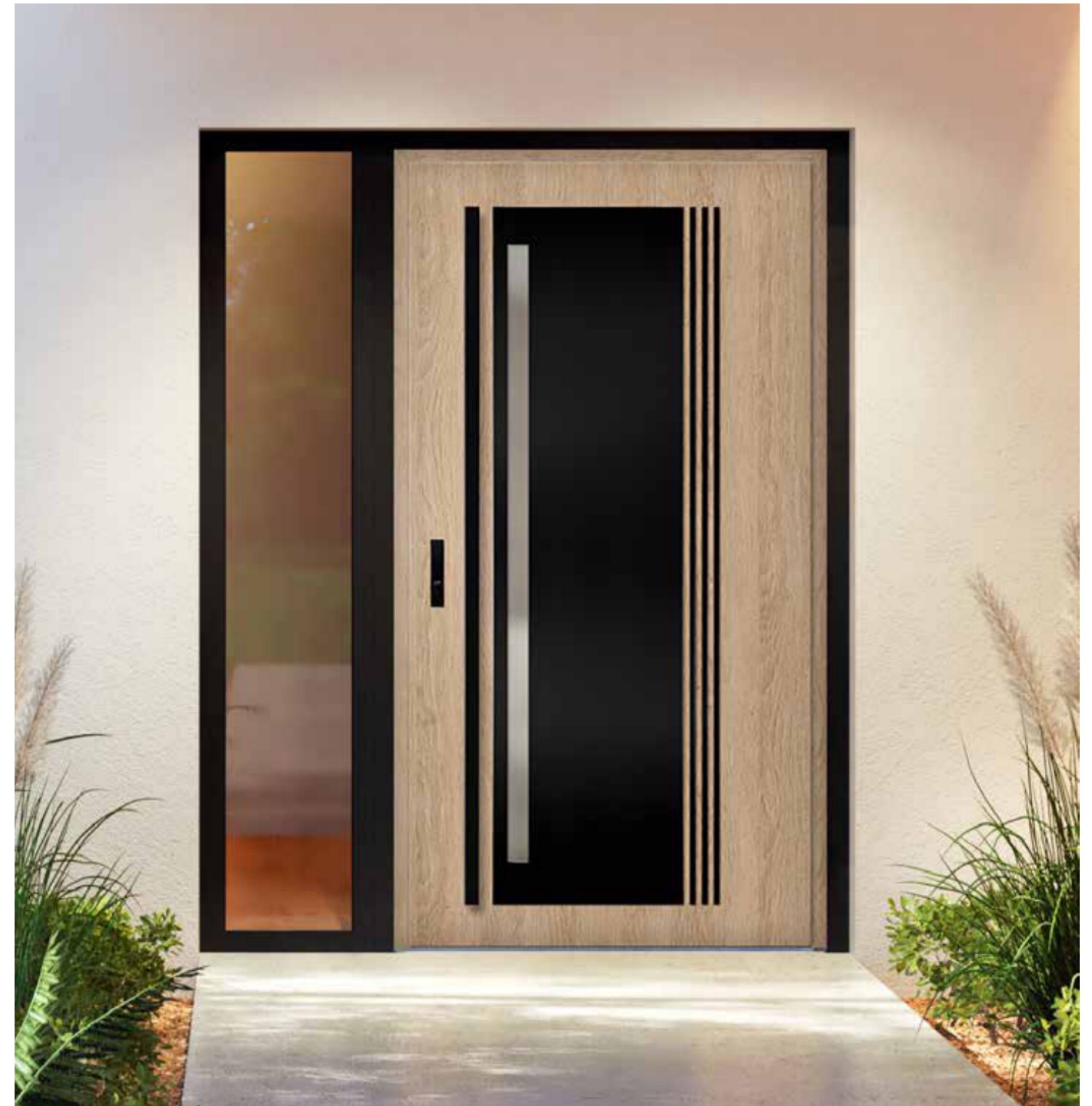
K13-Model 2



K13-Model 3



K13-Model 4



K14- Model 4



K14-Model 1



K14-Model 2



K14-Model 3



K14-Model 5



K14-Model 6



K15-Model 1



K15-Model 2



K16- Model 6



K16- Model 1



K16- Model 2



K16- Model 3



K16- Model 4



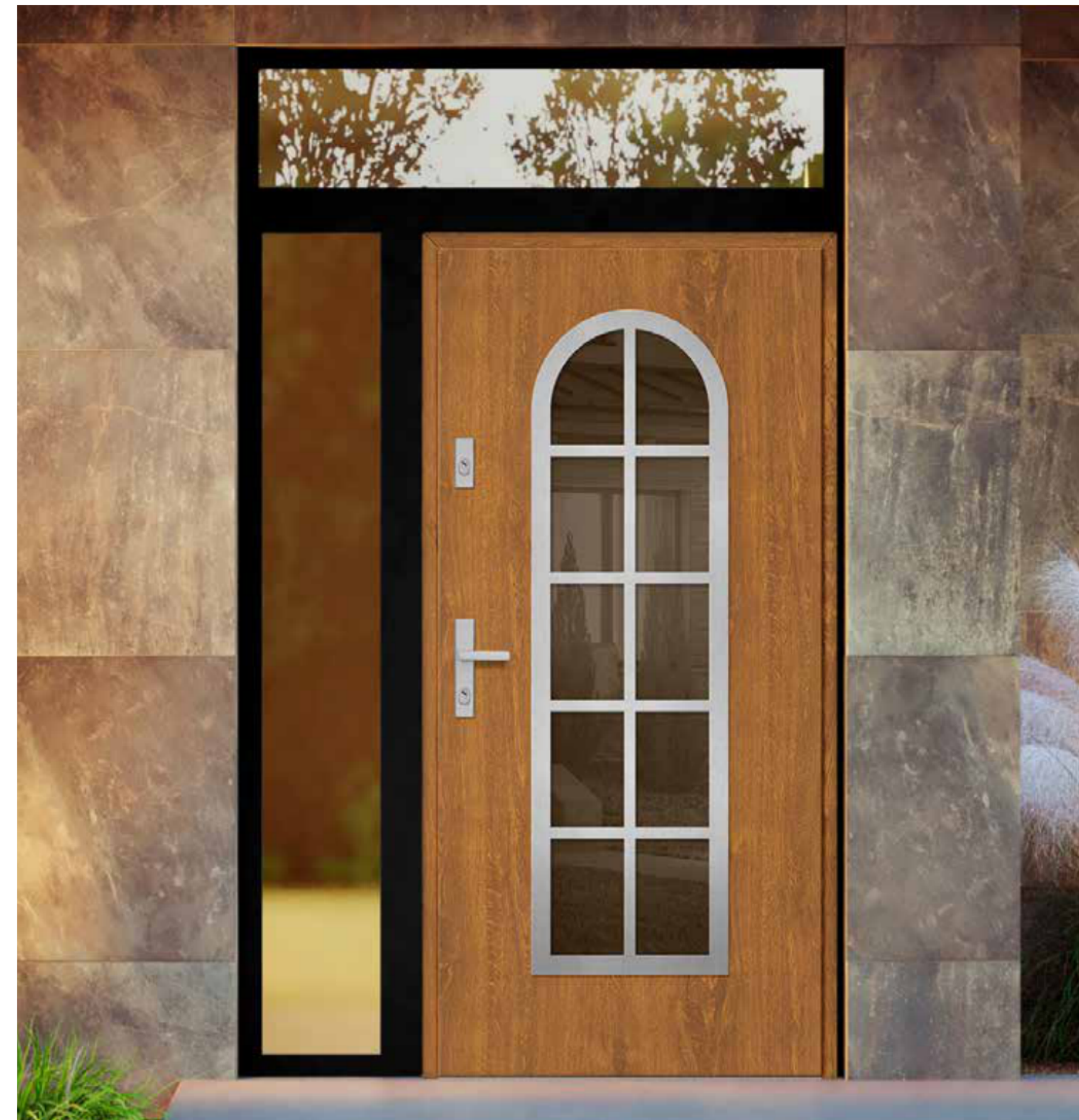
K16- Model 5



K17-Model 1



K17-Model 2



K18-Model 4



K18-Model 1



K18-Model 2



K18-Model 3



K19-Model 1



K19-Model 2



K20- Model 2



K20-Model 1



K20-Model 3



K20-Model 4



K20-Model 5



K21- Model 4



K21- Model 1



K21- Model 2



K21- Model 3



K21- Model 5



K21- Model 6



K21- Model 7



K22-Model 3



K22-Model 1



K22-Model 2



K23-Model 2



K23-Model 1



K24-Model 10



K24-Model 1



K24-Model 2



K24-Model 4



K24-Model 7



K24-Model 8



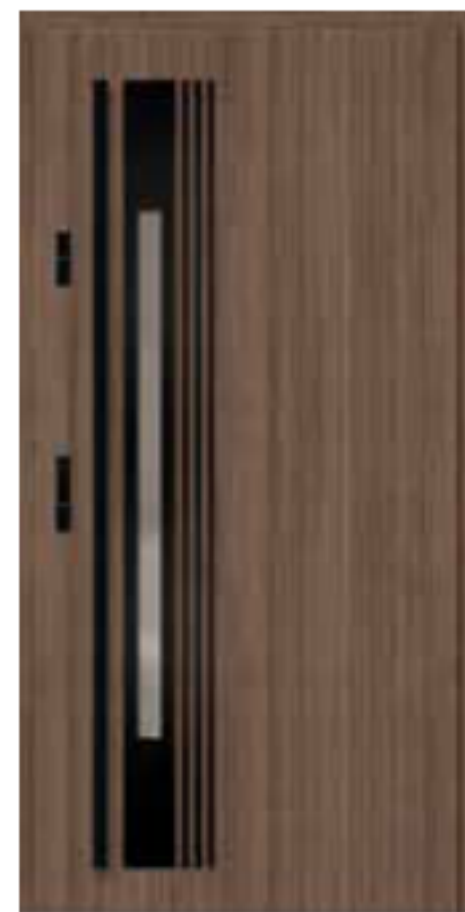
K25-Model 1



K25-Model 2



K25-Model 3



K25-Model 4



K25-Model 5



K25-Model 7



K26-Model 3



K26-Model 1



K26-Model 2

# K64 FRONT DOOR COLLECTION



K64 entrance doors combine the security and stability of a thermally enhanced steel door leaf and the reliability of an aluminium frame. All steel and aluminium materials are wrapped in Renolit Exofol, a high-performance surface treatment, which has Solar Shield Technology embedded.

Renolit reflects infrared radiation, substantially reducing the build-up of heat in the doors exterior, so your door will retain its geometry and exact fit. You are free to choose from 18 Renolit finishes and we can manufacture dual colour doors (internal/external).

## 18 Renolit Finishes



\*The Natural Oak grain can be vertical or horizontal on the door slab, but vertical only on the frame.

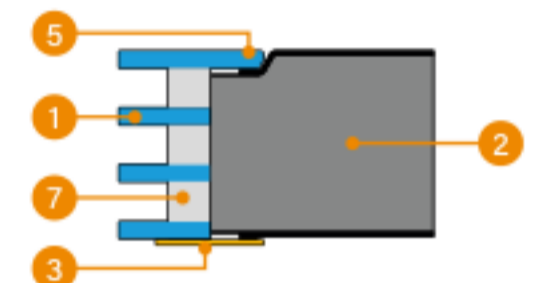
# GLASS, LABEL AND STAMP FINISHES

## GLASS FINISHES

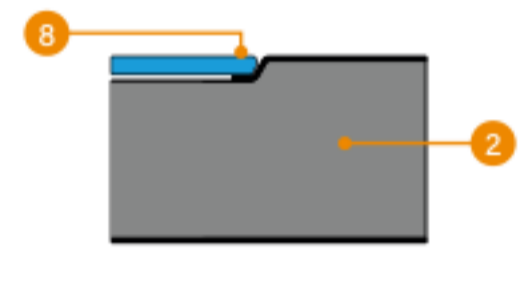
The external glass is black and is flush with the door sash, whilst internally the glass is clear and is complemented by a steel decorative door panel which is painted black.



Black glass panel, flush with the surface of the door sash externally



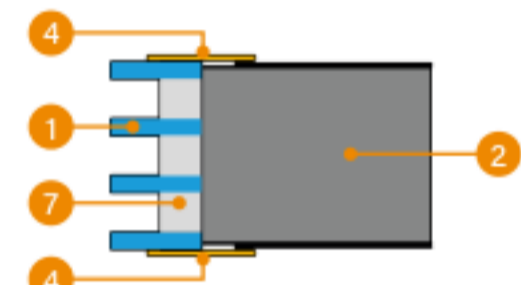
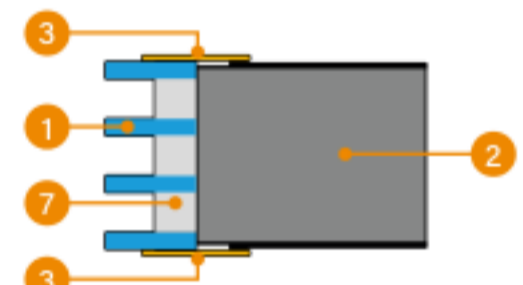
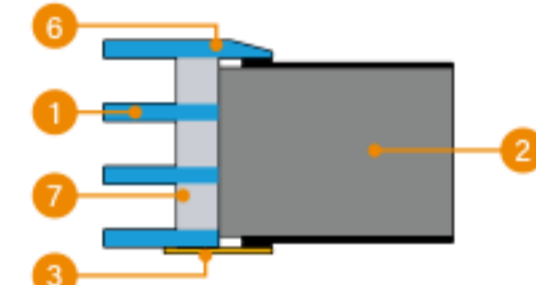
Lacquered black glass panel, flush with the surface of the door sash externally



1. Glazing unit
2. Door sash
3. Decorative panel made of stainless steel, painted black bonded to the surface of the door sash
4. Decorative panel made of stainless steel in Steel finish, bonded to the surface of the door sash
5. Glass flush with the surface of the door sash, located at the rebate side
6. Glass with typical chamfer bonded to the surface of the door sash
7. Black spacer bar
8. A decorative panel always flush with the outside of the house made of black painted glass, so-called Lacobel

## LABEL FINISHES

The decorative panel is placed on the surface of the door sash, creating a delicate 3D effect



## STAMP FINISHES

An attractive groove within the door sash.



10mm wide x 2mm deep



25mm wide x 2mm deep



25mm wide steel or Black inlay – can be flush or indented. Available on one side or both sides of the door.

## FINISHES AVAILABLE ON INDIVIDUAL MODELS



Model K1



K2, K3, K4, K5, K6, K9, K10, K11, K13, K14, K15, K16, K17, K18, K19, K20, K21, K24, K25, K26



K23, K26



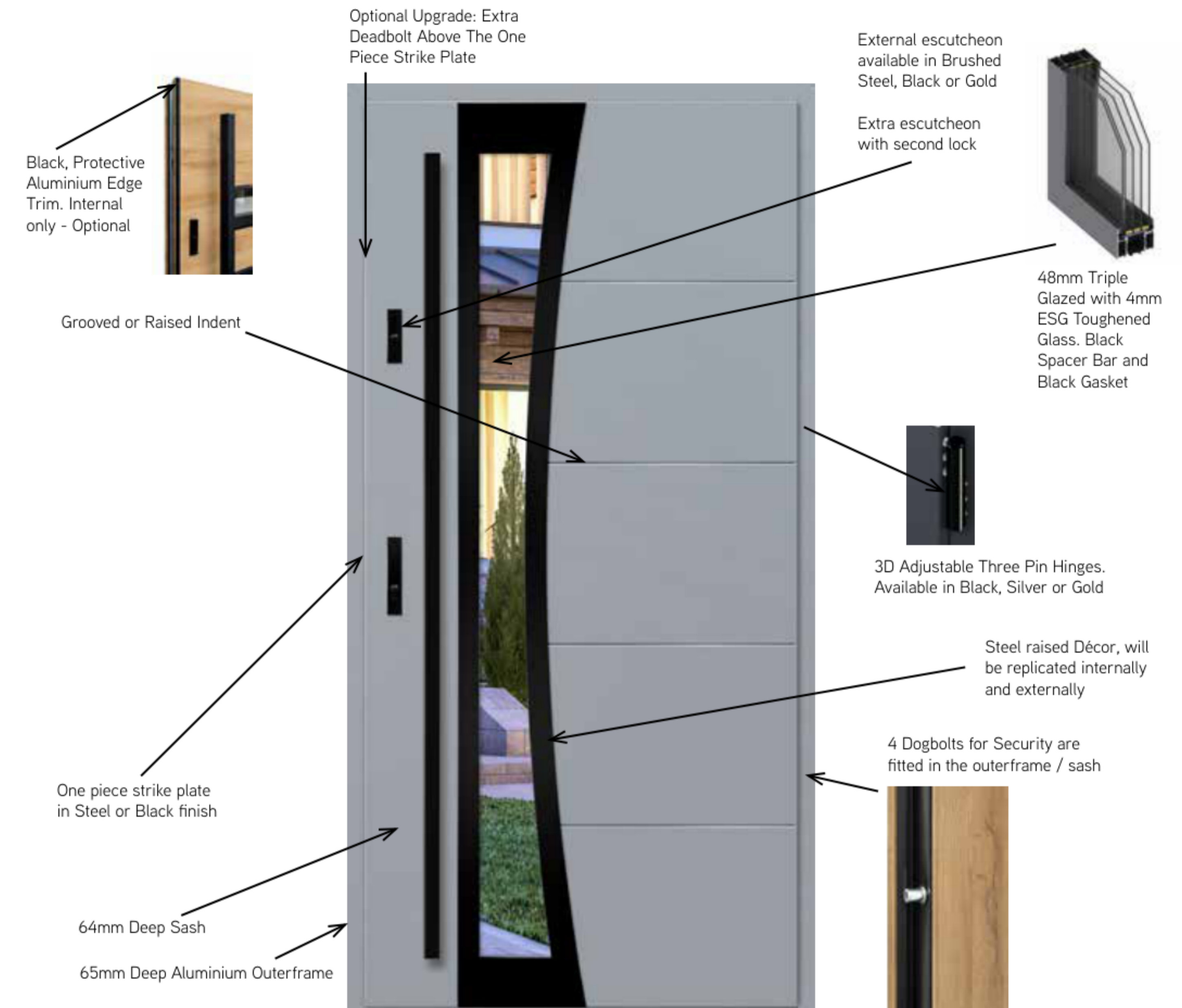
K8



K12



K7



## As Standard

- Aluminium Outerframe
- 64mm deep door sash with high security steel skin, 65mm deep frame
- RC2 and PAS 24 Security
- 0.77 W/m<sup>2</sup>K U Value on Solid Designs. 0.88 W/m<sup>2</sup>K on Glazed Designs
- Multi-point lock with two hooks, two horizontal bolts, one deadbolt and a latch
- 3D adjustable three pin hinges. Available in Black, Silver or Gold
- Lever handle internally in Black, Steel or Gold
- Round or Square pullbar externally in Black or Steel
- Maximum single door size 1150mm x 2250mm
- 20mm Warm low threshold
- 4 Hinge security dog bolts
- Doors with glazing are triple glazed
- Three keys
- Any Steel décor will be replicated on the inside and outside of the front door

- One piece strike plate with Steel finish
- 15.5mm hinge clearance
- Doors weigh circa 90 Kgs

## Optional Extras

- Thumbturn internally
- Black, protective aluminium edge trim cover internally
- Drop down weatherseal provides improved thermal insulation and weathering
- Additional deadbolt locking point towards top of door – Keyed alike
- Triple glazed side lights or top lights
- Aluminium corner post
- Day latch
- Spyhole in Black or Steel
- 28mm Aluminium Add-on Extension
- 25mm high Cill - Silver Anodised or Black
- 5 Keys
- Black Strike Plate

# HANDLES AND ACCESSORIES

- External Pull Bar Handles
- Round or Square in Black or Steel
- 600mm, 1200mm, 1800mm



- Internal Lever Handles (can be used externally)
- Available in Steel, Black or Gold



## Letterbox

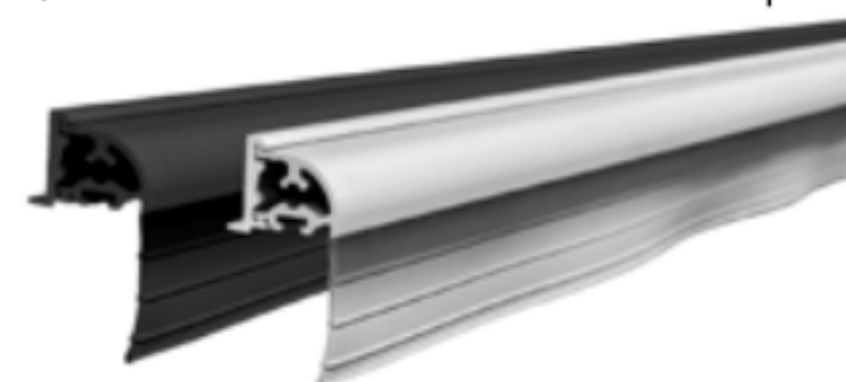


- Available in Black, White, Gold or Anodised Silver

- Key/Key
- Key/Thumbturn (option)

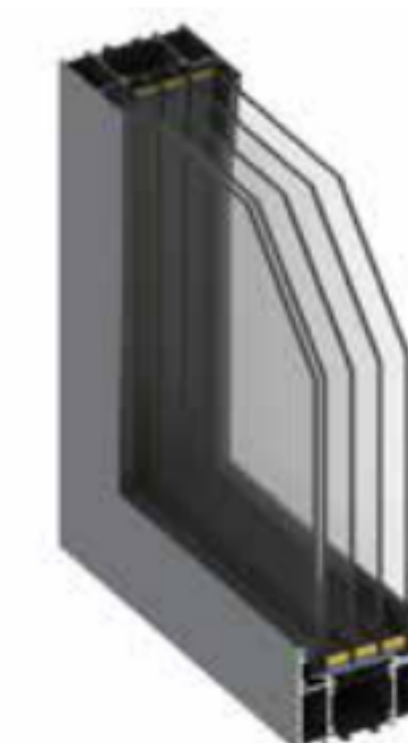
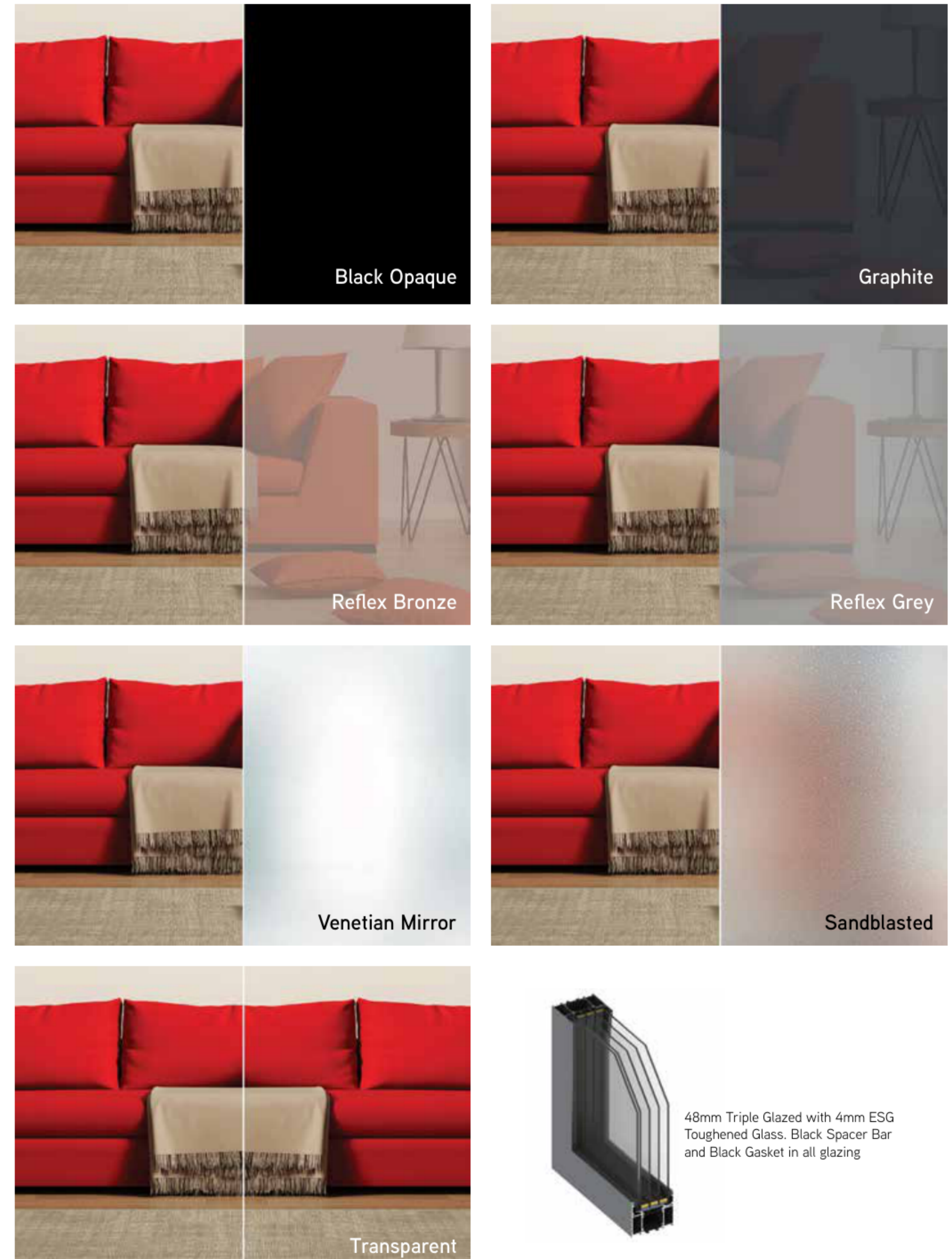


**Rain Deflector** (Available on a select number of models; recommended for inward opening doors)



- Available in Black or Anodised Silver

# GLASS DESIGNS



48mm Triple Glazed with 4mm ESG Toughened Glass. Black Spacer Bar and Black Gasket in all glazing



| [www.kevindickinsonwindows.co.uk](http://www.kevindickinsonwindows.co.uk) |

| 0190065972 |

| [info@kevindickinsonwindows.co.uk](mailto:info@kevindickinsonwindows.co.uk) |